

11/13/2008

**United States Trail Ride, Inc.,
Tri State Riding Club &
Loudoun Horse Association**

CONTACTS:
MARY TERPAK: mterpak@earthlink.net
LYNELL ABBOTT: herdocap@aol.com
LESLIE GOTTESMAN: hkbrys@lucketts.net
MARY GUSTAFSON: ddesign2@mindspring.com

Lovettsville Community Park Equestrian Facilities Proposal

The Lovettsville Community Park Advisory Committee has designated Field # 1 as the Proposed Equestrian Center. Please accept the following proposed facilities to be included in the Equestrian Center:

PERIMETER OF FIELD # 1

1. **Three-board fencing will be used to enclose the approximate perimeter of Field #1 designated for equestrian use. This will serve to contain animals which may become loose during equestrian activities. Approximately 3200 feet will enclose Field # 1. Desired materials are the RAMM recyclable rubber fencing with oak posts. RAMM is a low-maintenance material requiring no painting and does not deteriorate like wood planks.**
2. **Trees to be planted along the south side of the perimeter will provide a natural barrier and shade between the equestrian field and Milltown Road. Number and species of trees is undetermined at time of proposal.**

OUTDOOR ARENA

3. **Outdoor Arena to be constructed on the southeast side of Field # 1 running north to south. Size of Outdoor Arena will be 250' x 300'. Long sides to face east and west.**
 4. **Two-board RAMM fence will be constructed to contain Outdoor Arena with one gate on each of its four sides. The gates used on long (east and west facing) sides shall be a minimum of 12' or 14' wide while the north and south gates shall be a minimum of 24' and maximum of 28' wide.**
 5. **Outdoor Arena footing to be sand/stone dust.**
 6. **Electrical to be a minimum of a 300 amp panel for lighting at arena. Also, the 2 maintenance buildings to be equipped with electrical. Three water pumps**
-

strategically located, one between the two parking areas, one between the outdoor arena and warm-up paddocks and one between the indoor and outdoor arenas.

INDOOR ARENA

7. Size of Arena will be 100' x 200'. To be situated on the northeast side of Field #1 with the long sides to face north and south. Attached to the indoor arena will be a 12' x 36' maintenance building with doors facing to the south toward the outdoor arena. Restrooms are also envisioned as part of the indoor arena with electrical for lighting and water hookup. This facility will conform to Loudoun County Building Code as well as the Americans with Disabilities Act guidelines.

PARKING AREA

8. Two permanent parking areas to be constructed: Parking Area # 1 on north side of Field #1 at 300' x 100'; Parking Area # 2 running perpendicular and on the west side of Field #1 will be 300' x 150'. The surface will be either gravel or concrete grid laid into soil and over-planted with grass.

MAINTENANCE BUILDING

9. A 12' x 36' maintenance building with appropriate set back from Milltown Road and located on the south side of the outdoor arena will be used to store harrow, jumps and other such equestrian fixtures typically used at shows and clinics. The long side of building will face the Outdoor Arena with doors on either short end facing east and west.

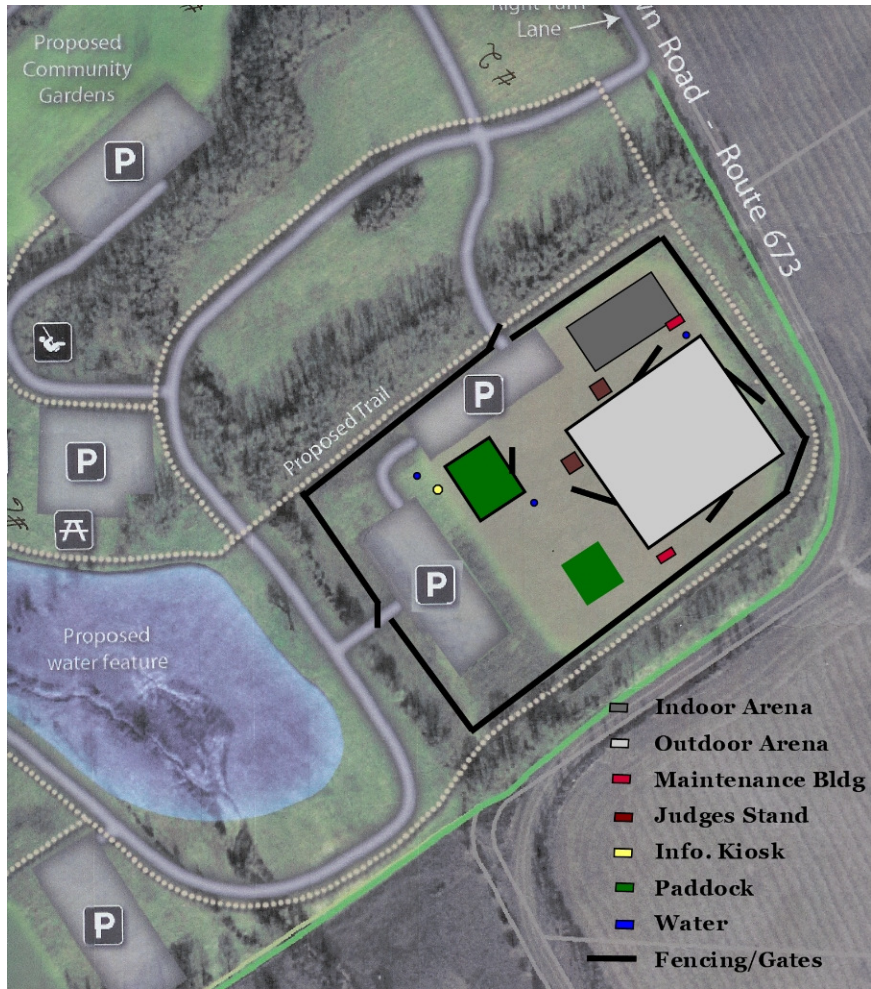
WARM-UP PADDOCKS

10. Two warm-up paddock areas will be created. One area to be unfenced and in close proximity and to the west of the Outdoor Arena. It will have stabilized grass footing and be 100' x 75' running east and west. The second to be three-board RAMM fenced with a gate facing east and located south of Parking Area # 1. It is to be stabilized grass footing and will be 125' x 90'.

MISCELLANEOUS

11. An informational kiosk used to publicize organized equestrian events will be built in a location in general proximity to Parking Area # 1 and # 2 and where it will be convenient to foot and horse traffic.
12. Two portable judging stands will be built for use close to the Outdoor Arena.

Provisions for manure control in the way of either a harrow for dragging, manure spreader or muck shed to house manure concentrated at the improved portion of the equestrian facilities; i.e., ring, parking area. This will be necessary for organized events.



Submitted by,

United States Trail Ride, Inc., Tri State Riding Club & Loudoun Horse Association